

Apply now for free school meals for fall, get \$435 in Summer 2022 P-EBT benefits

Free school meals will no longer be available to all students in the upcoming school year.

Families who are eligible for free school meals will need to apply for those meals this fall.

Sign up before September 2, 2022 to be eligible for \$435 in Summer P-EBT benefits (if not already received).



Families are eligible if the household gross income (before taxes and other documents) is:

Household size	\$ per year	\$ per month
1	\$25,142	\$2,096
2	\$33,874	\$2,823
3	\$42,606	\$3,551
4	\$51,338	\$4,279
5	\$60,070	\$5,006
6	\$68,802	\$5,734
7	\$77,534	\$6,462
8	\$86,266	\$7,189
Add for each additional person	\$8,732	\$728

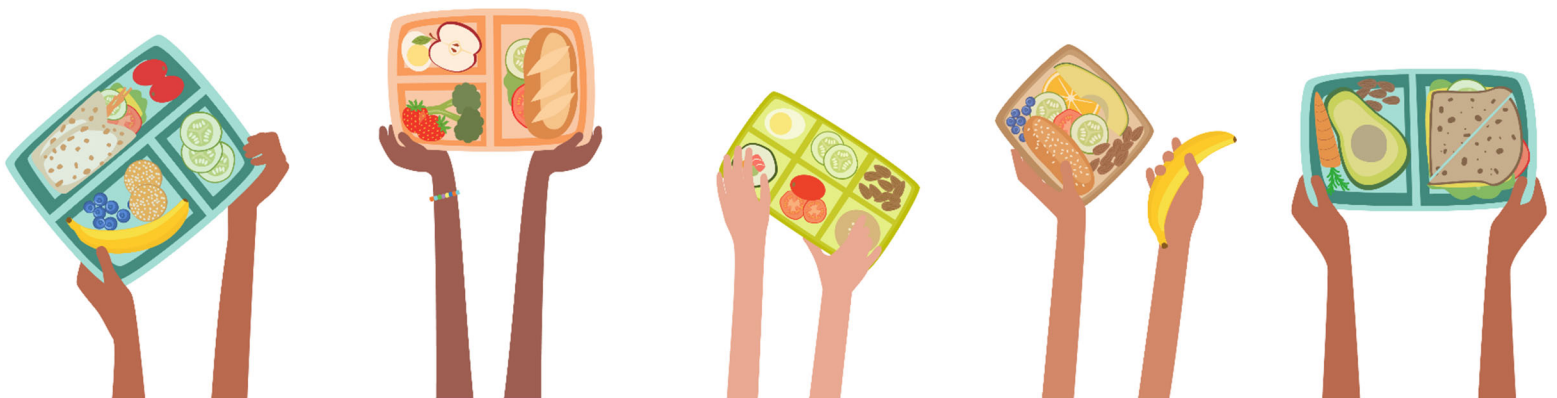
Check with your child's school for how to apply. Most school districts have application information on their website.

Need help?

Had a P-EBT card but lost it? Call the EBT Edge Customer Service Center at 888-997-2227 to order a replacement.

Other questions about P-EBT, free school meals, or need help finding other food resources? Call or text the Minnesota Food HelpLine at 888-711-1151.

See the FAQ on the next page for more information.



Frequently Asked Questions:

My kid attends a CEP school. Do I need to do anything?

A school participating in the Community Eligibility Provision or CEP has enough students directly eligible for free school meals to be able to serve free meals to all students without families needing to apply. If your school offered free school meals to all before the pandemic, it was likely a CEP school.

Students in CEP schools were registered for Summer 2022 P-EBT benefits.

My family has received Free and Reduced-Price meals in the past. Do I need to do anything?

Yes! If you used to sign up for free and reduced-price school meals before the pandemic, you need to sign up for meals for the upcoming school year. Apply at your child's school before Sept. 2 to be eligible for \$435 in Summer 2022 P-EBT benefits.

Our income is lower now than it was last school year, what do we do?

If your income is lower than last year because you lost a job or had your hours cut, be sure to check if you qualify for free or reduced-price school meals (see the income limit chart on the other page). If your income is below that limit, be sure to apply for free and reduced-price school meals at your child's school. If you submit your application before Sept. 2, you will be eligible for \$435 in Summer 2022 P-EBT.

We already got \$435 this summer, what do we need to do?

Either you qualified for free or reduced benefits during 2021-22 school year or your child attended a CEP school so you were automatically eligible for the Summer P-EBT benefits, so there is nothing else to do to get them. You will still need to apply for free and reduced-price school meals at your child's school for the fall (school year 2022-23).

My child starts kindergarten this fall, can we get the \$435 in P-EBT?

Yes, you can apply for free and reduced-price school meals at your child's school before Sept. 2 and if you qualify, can still get the \$435 in P-EBT.

I have kids under 5, can I get the \$435 in P-EBT?

Yes, but only if you are currently on SNAP. Families with children 5 years old and younger will get two rounds of Summer P-EBT benefits added to their SNAP/EBT card. One payment in August for \$218 and another in October for \$217 (\$435 total). If you aren't currently enrolled in SNAP, contact the Minnesota Food HelpLine at 888-711-1151 to check if you are likely eligible for SNAP.

We had a P-EBT card last school year, but we lost it. How do we get a new one?

You can call the EBT Edge Customer Service Center for a replacement card at 888-997-2227. When you call, wait for the system to ask for your card number and then press 2 for a representative.

We have moved since last school year. How do I update my child's address?

You will need to update the address with both your child's school and by filling out the state's P-EBT webform here: <https://pebthelp.state.mn.us/>

We applied for free and reduced-price school meals for this fall. When will we get the \$435 in benefits?

If you signed up for school meals, the \$435 Summer P-EBT payment will be issued to you in October.