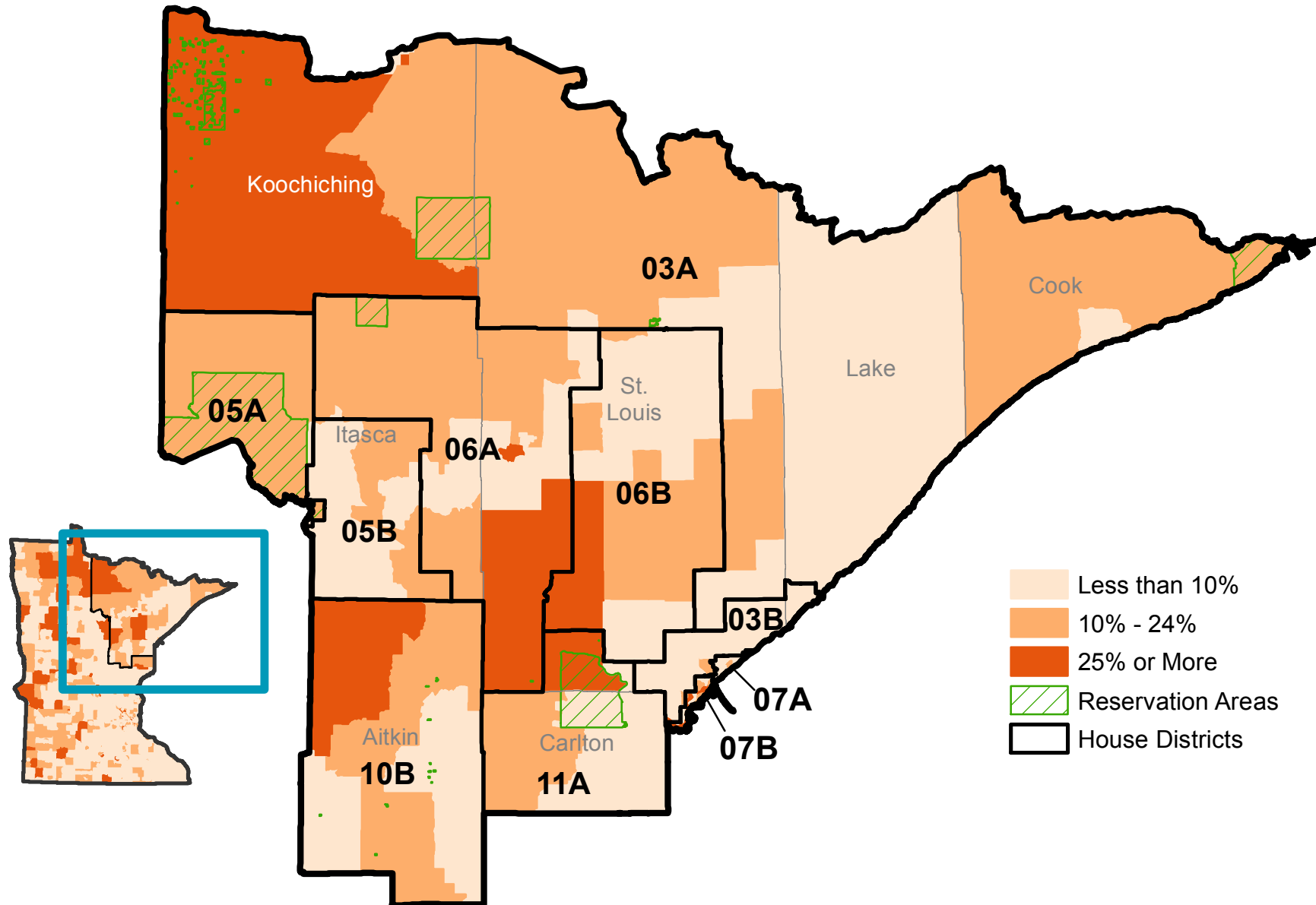


Share of Residents with Low Healthy Food Access Due to Income and Distance Barriers in Minnesota's Northland Region



Note: Map prepared by Wilder Research in November 2016 as a supplement to Rausch, E.J. and Mattessich, P.W. (2016, April). *Healthy Food Access: A View of the Landscape in Minnesota and Lessons Learned from Healthy Food Financing Initiatives*. Percentages reflect shares of residents who are low-income and have low retail access; a complete definition of low-income, low access is available in the April 2016 report. Data originally retrieved from U.S. Department of Agriculture Economic Research Service Food Environment Atlas. (2015, August).



Wilder Research